

## mission

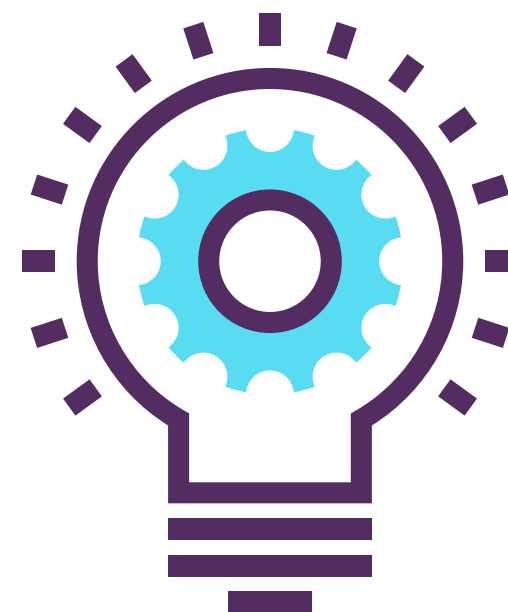
To provide information resources to help fulfill the educational, cultural, and recreational needs of the community in a welcoming and respectful atmosphere.

## we offer

books, audio, DVDs  
databases  
interlibrary loan  
programs  
reference desk  
public computers & wifi  
notary public  
Fee-based services:  
printing (b&w, color, 3-D)  
scanning & faxing

## online

[fortdavislibrary.ploud.net](http://fortdavislibrary.ploud.net)  
Facebook:  
Jeff Davis County Library  
Twitter: @JDC\_Library  
email:  
[library@co.jeff-davis.tx.us](mailto:library@co.jeff-davis.tx.us)



# Jeff Davis County Library

100 MEMORIAL SQUARE  
FORT DAVIS, TEXAS  
(432) 426-3802  
FAX: (432) 426-2225



## library cards

Minimum age is 18  
Identification required for  
address verification  
JDC residents: Free

Limited check-out privileges  
Texas residents: Free upon  
presentation of TexShare card  
from home library  
Out-of-state: \$20 annual fee

No late fees, but patrons are  
responsible for replacing lost or  
damaged materials. Books and  
audiobooks are marked lost after  
60 days overdue; DVDs, 30 days.

Drop boxes available 24/7  
Renewals available online, by  
phone, or in person.

See policy manual, available at  
the Circulation Desk, for details.



**“The only thing that you  
absolutely have to know  
is the location of the  
library.”**

ALBERT EINSTEIN

## loan periods

**Books: 21 days**  
**Audiobooks: 21 days**  
**DVDs: 7 days**  
**All materials can be  
renewed once.**

## computers

The Jeff Davis County Library  
offers public computers for  
patron and visitor use.  
Residents must use their library  
cards for access. Guest passes  
are available for visitors.  
Free wifi can be accessed in and  
around the library with a  
password, available at the  
Circulation Desk.

## children

We welcome children of all ages  
to use the facilities, collections,  
and programs.  
Children younger than 13 must  
be supervised at all times in the  
library by a parent or caregiver  
age 16 or older.  
Please see policy manual for  
details.

